

# MOST

AN EXCLUSIVE PRODUCT OF  
THE MEGA FORTRIS GROUP



Global solution provider of real time supply chain monitoring, enabling predictive insights for proactive actions

# Real-Time Updates On:

- Temperature
- Humidity
- Light
- Location
- Shock



SMS Alerts



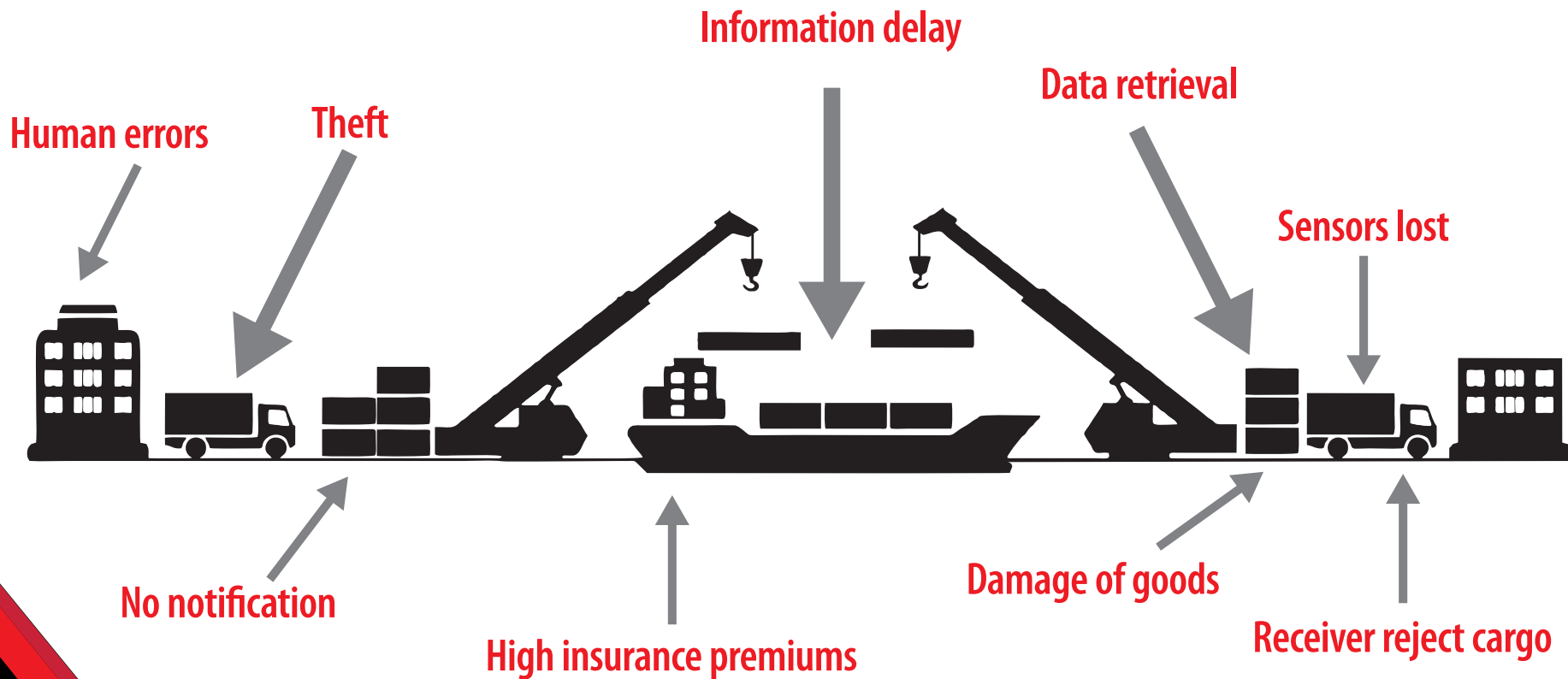
Real-Time Updates



Trip Reports

# Current problem in the market

Lack of real-time data is a major problem throughout the supply chain





# MOST Services

## Loaded with power

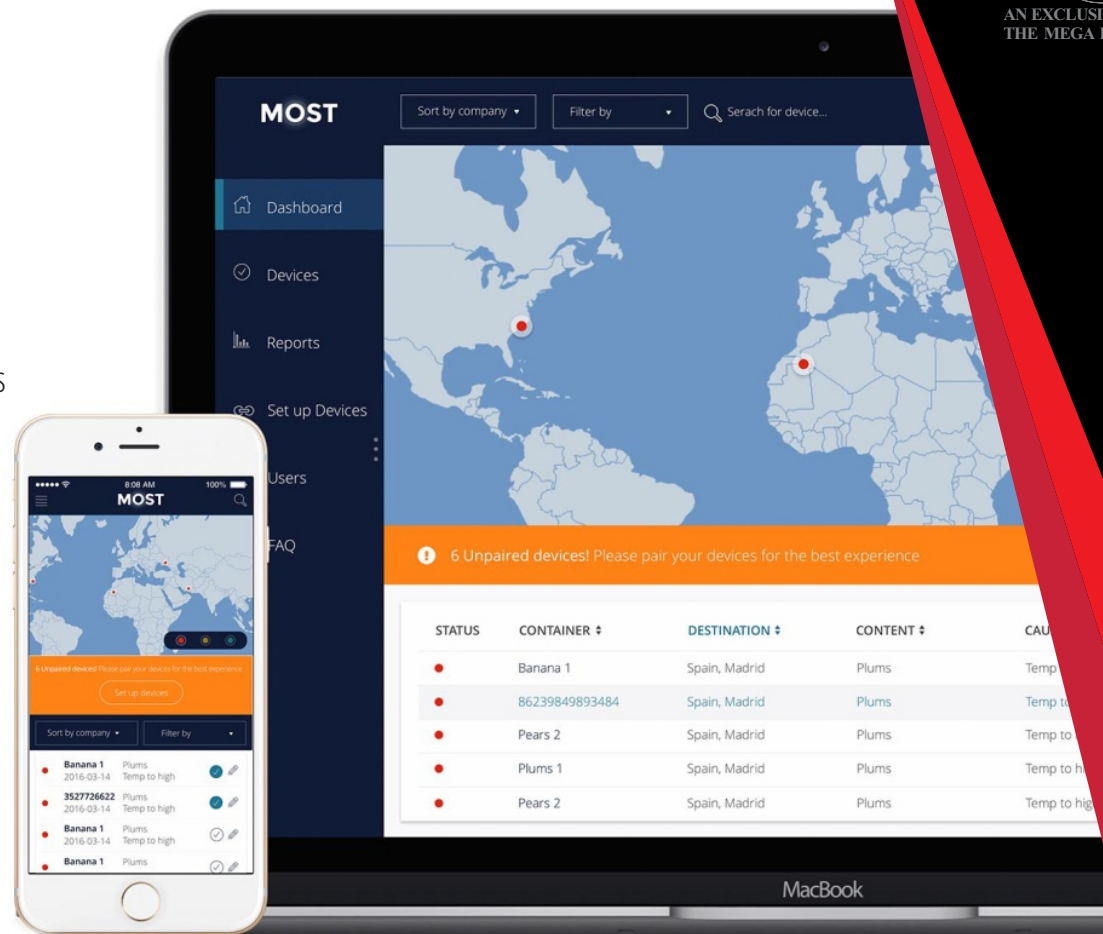
MOST has five sensors that detect location, temperature, humidity, light and shock. The device connects to the internet via a GSM modem and continuously uploads data to keep you informed about your cargo's environment.

## Unbroken communication

With connection to the GSM network you will never have to worry about missing out on important information regarding your cargo. The all-in-one functionality of the MOST device lets the user monitor all external influences during the journey.

## Backup to the cloud most

Stores all your data seamlessly during the journey with cloud-supported backups. The device wirelessly synchronizes and backs up your data to the MOST control panel, letting you access reports and alerts over the web or via the mobile interface.



# The Enabler

Multi-function digital device

## Digital Sensors



Position



Light



Temperature



Shock



Humidity



## Battery longevity

MOST is optimized in a number of ways to keep the battery life long



## MOST Antenna

The strength of the antenna makes sure even the toughest environments can be monitored



## Digital sensors

Data does not get distorted or changed when transmitted and sensors are factory calibrated. Market leading accuracy

# Device Specifications

<b>GSM Modem</b>	Quad band GSM 850/900/1800/1900MHz GPRS Data connectivity Location update every hour*
<b>SIM</b>	Global data roaming
<b>Battery type &amp; life</b>	Lithium-ion One -year storage life 60 days' use in 0°C **
<b>Charging interface</b>	USB -C
<b>Attachment</b>	Attach with 2 -sided tape on the back side of the device. Device should be attached close to doors.
<b>Alarm function</b>	Programmable high and low limits; alarm is triggered when measurement exceeds set limits.
<b>Start-up options</b>	Manual push button
<b>Typical dimensions</b>	Diameter: 125 mm Thickness: 30 mm
<b>Weight</b>	220g
<b>Certifications</b>	Quality assurance CE/FCC. Temperature and humidity Sensor NIST traceable.
<b>Computer/mobile interface</b>	Easy access to your data.
<b>Water resistance</b>	IP54 = Splash proof
<b>Sales pack</b>	Packaged in 10 device sales packs.

<b>Digital light sensor</b>	Triggered by light.
<b>Digital temperature sensor</b>	Default 60 mins measurement and data - sending interval. Temperature measurement range: -20°C to 55°C Temperature accuracy range: ±0.3°C over full temperature measurement range  Resolution: 0.015 *** CERTIFICATION: NIST TRACEABLE
<b>External digital temperature sensor interface (probe ready)</b>	Default 60 mins measurement and data - sending interval. Digital interface using I2C and interrupt for waking up system USB -C connector
<b>Digital humidity sensor</b>	Default 60 mins measurement and data - sending interval. Humidity measurement range: 0% to 100% RH Humidity sensor accuracy range: ±2% RH from 0 to 90% ±3% RH from 90 to 100%. Relative humidity resolution: 0.01% RH ****
<b>Digital shock sensor</b>	Default 60 mins measurement and data - sending interval. 3-axis G -sensor. G -forces to be measured

\* Location update Within GSM coverage

\*\* Battery life Based on hourly sensor readings and GSM uploads

\*\*\* Alert limit Programmable alert level from front end/app

\*\*\*\* Humidity RH accuracy stated within temperature exposure range of 5 °C to 60 °C, non - condensing



# MOST Control Panel

MOST's control panel lets you follow your shipment effortlessly. With this powerful tool, you simultaneously eliminate human error and ensure that your data never will be lost. NO installation or setup needed everything is web-based.



## Alerts



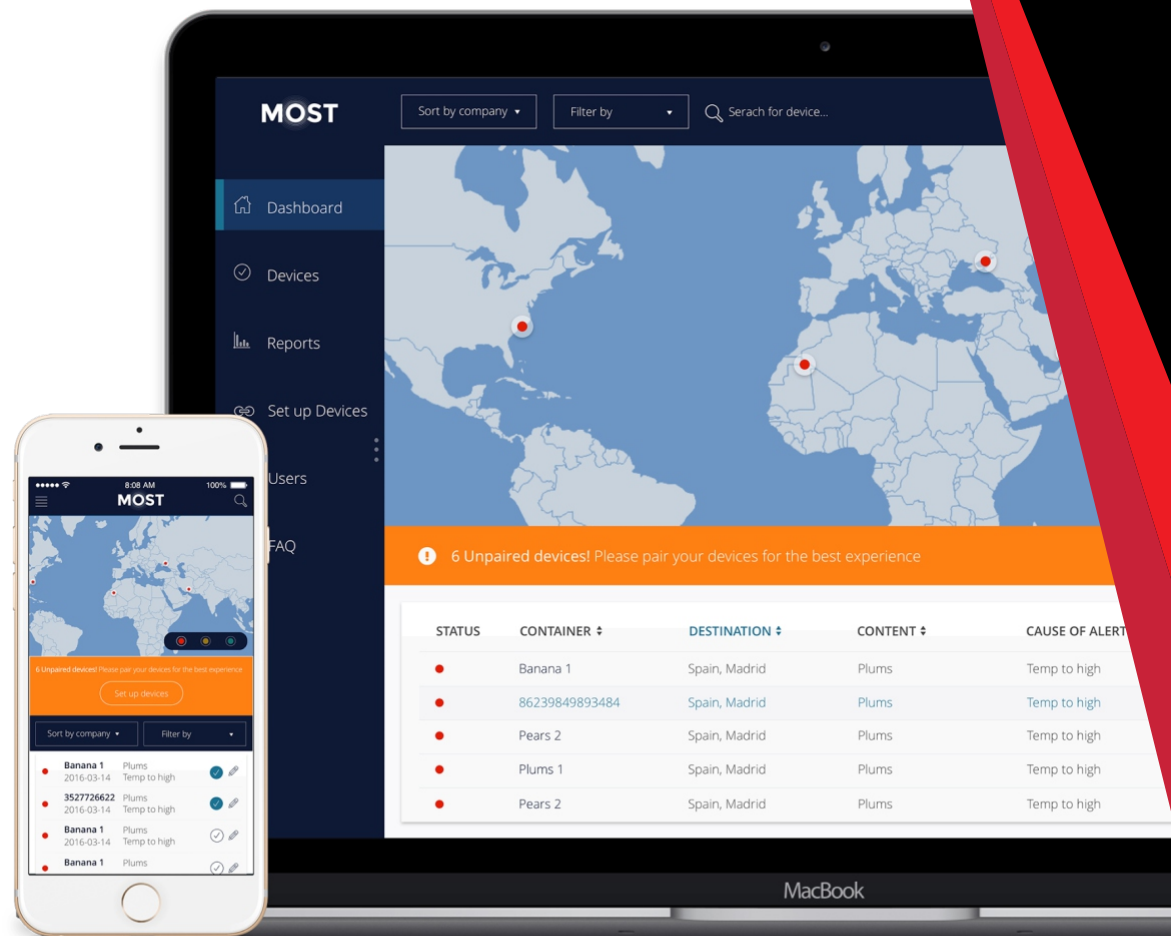
## Real time updates



## Trip reports



## Device administration




# The Dashboard

The **MOST Dashboard** gives you a quick overview of all your devices shown as a list as well as on a geographic map.

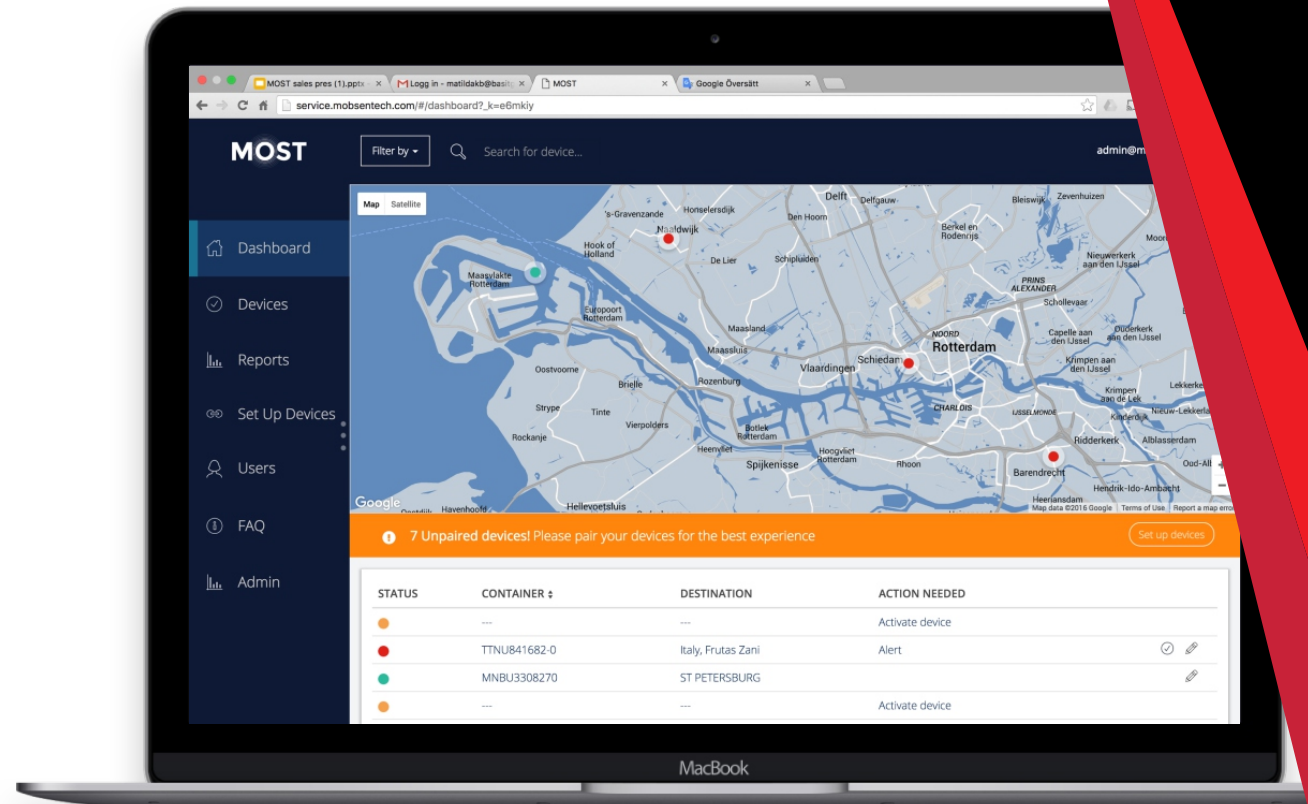
## The Map

Locate your devices around the world. The color of the device indicates its current status.

-  **Not paired**
-  **OK**
-  **Alert status**

## The List View

Digging further into the status of your devices, easy access to make any changes to thresholds or information about your cargo.









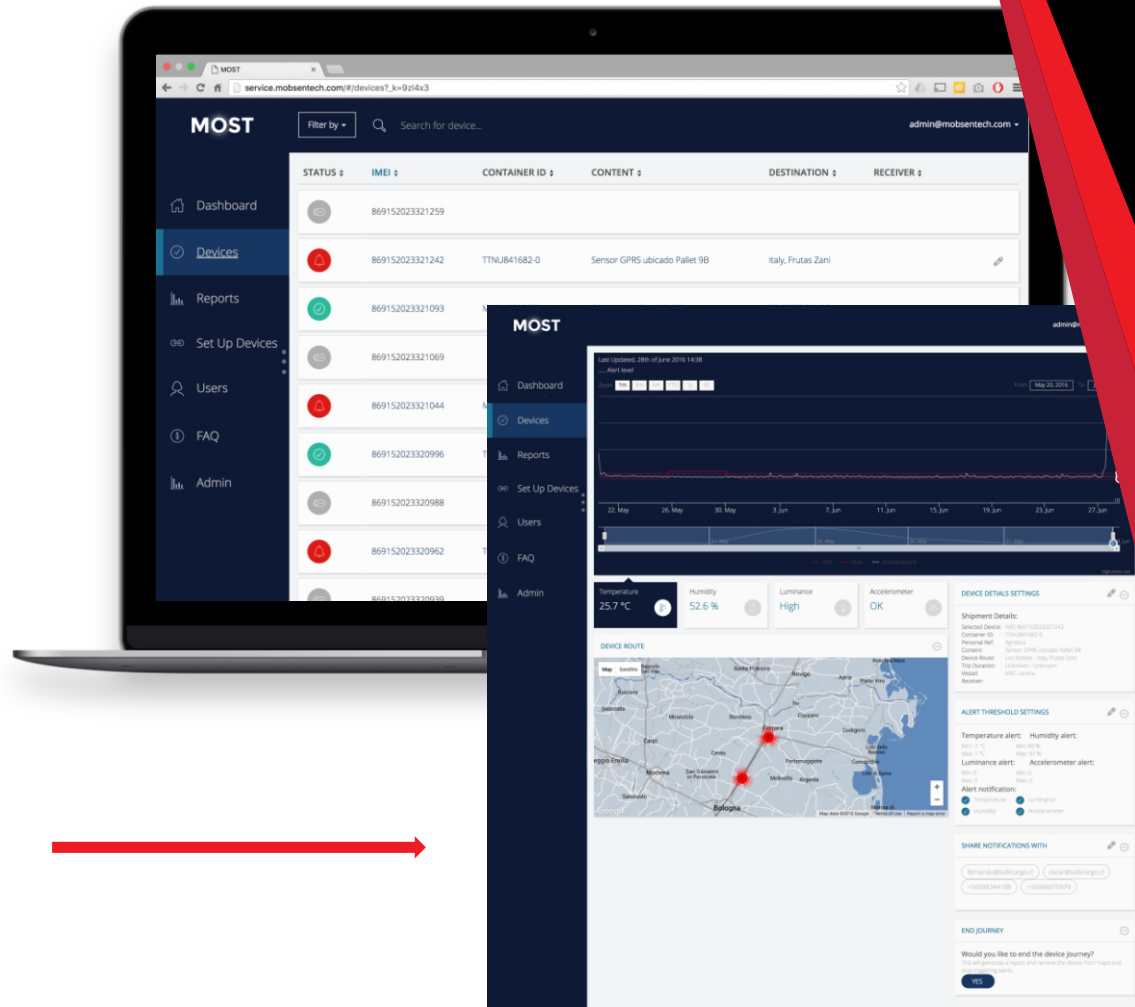
# Devices

Devices provide you with a list view of all your devices with additional information like IMEI number, container name and content of your cargo. Clicking on a device in the list takes you to the specific device for more details.

The colour of the device in the list indicates on its current status

-  **Not paired**
-  **OK**
-  **Alert status**
-  **Not set up**

Monitoring your device View the device's measurements of temperature, humidity, luminance, and accelerometer. Device details settings, Alert thresholds settings, Who you share notifications with and you can end the device's journey.



# Reports

MOST's real-time reports vastly increase your decision-making power. Download your data in formats conveniently tailored to your business needs, and make calculated decisions to benefit your enterprise.

## Specific trip reports

Choose what interval you want to take a closer look at.

Download

The trip report can be downloaded



# Set Up Device / Cargo

The **MOST Dashboard** gives you a quick and general overview of all your devices shown in a list view as well as on a geographic map.

## Set up the device

Fill in your trip information, set thresholds and alarm levels.

## Cargo profile

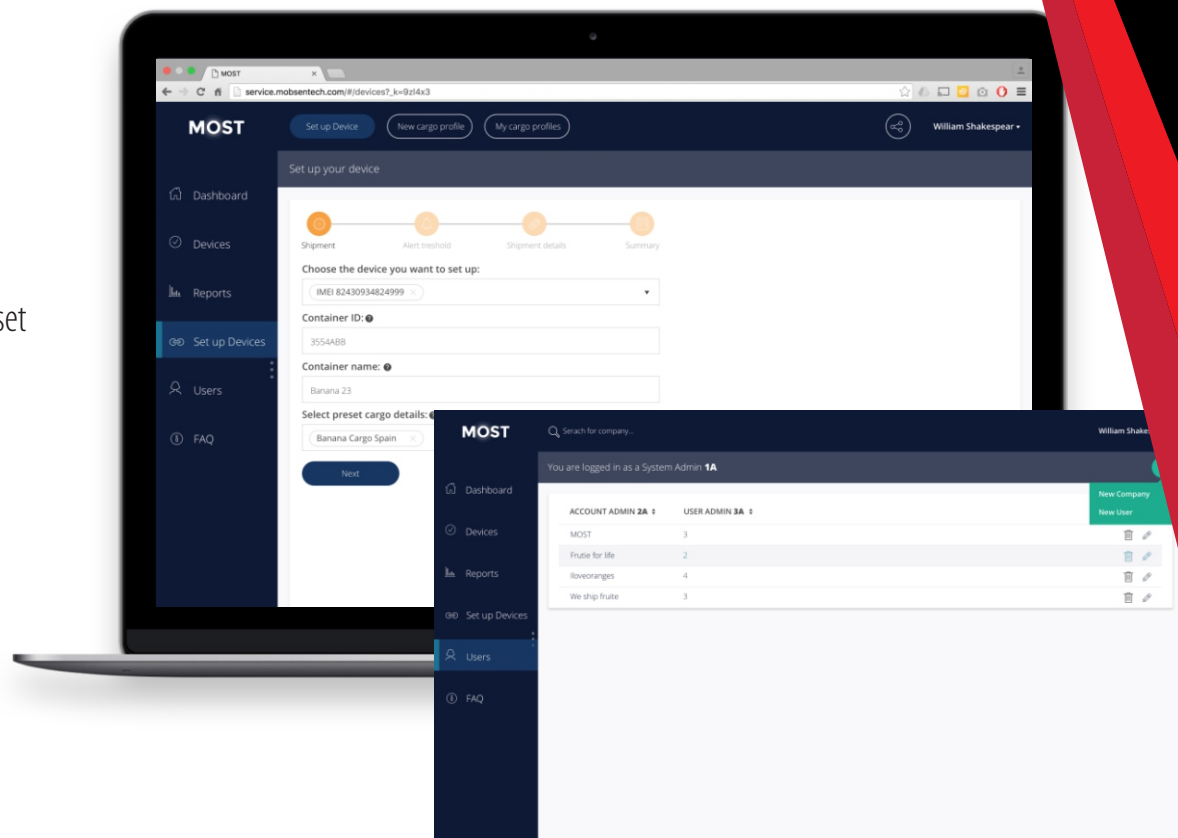
The "new cargo profile" gives you the opportunity to set up cargo profiles you know you often use and want to reuse.

## My cargo profiles

Saves your present cargo profiles for easy access.

## Sharing

Sharing is caring. Add other stakeholders to your shipments and let them follow your cargo. With the sharing function, everyone sees only what belongs to them, no need to login to multiple accounts.



# Benefits and Features



**Product  
specific monitoring**



**Competitive  
advantage**



**Transparency for  
all stakeholders**



**Increased quality  
of goods**



**Food safety**



**Real-time  
reporting/alarms**



**Proactive  
action possible**



**Quality translates  
into profits**

# Contact Details



[www.megafortris.co.za](http://www.megafortris.co.za)



[info@megafortris.co.za](mailto:info@megafortris.co.za)



**+27 10 591 2922**



**+27 86 527 2300**



**Unit 12 | Barolong Street | Icon Industrial Park  
Sunderland Ridge | Ext 28 | Gauteng | 0157**